



Sample name: M7873-Kynurenic acid-01

Injection date:

Instrument: A010

Location:

Inj. volume: 6

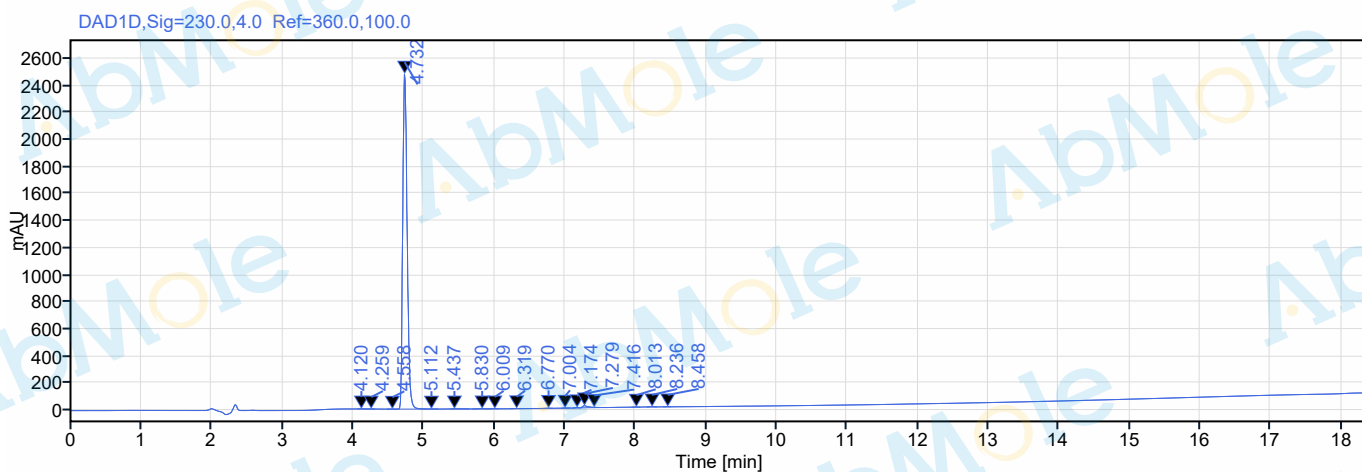
Type:

Acq. method: HPLC

Sample amount:

Processing method:

Manually modified:



Signal: DAD1D,Sig=230.0,4.0 Ref=360.0,100.0

RT [min]	Type	Width [min]	Area	Height	Area%
4.120	MM m	0.14	3.83	0.83	0.03
4.259	MM m	0.11	2.42	0.65	0.02
4.558	MM m	0.15	0.47	0.14	0.00
4.732	BM m	0.44	10861.34	2477.95	98.72
5.112	MM m	0.14	3.72	0.73	0.03
5.437	MM m	0.26	8.15	1.17	0.07
5.830	BB	0.22	6.39	1.03	0.06
6.009	MM m	0.16	2.60	0.58	0.02
6.319	MM m	0.13	2.96	0.71	0.03
6.770	MM m	0.13	3.10	0.77	0.03
7.004	MM m	0.12	1.72	0.44	0.02
7.174	BB	0.10	5.60	2.02	0.05
7.279	BV	0.19	82.63	15.53	0.75
7.416	VB	0.08	6.67	2.41	0.06
8.013	MM m	0.12	1.77	0.53	0.02
8.236	MB m	0.15	6.03	1.38	0.05
8.458	MM m	0.11	2.39	0.70	0.02